

ACO product catalogue

ACO GRP Light Oil Separators

ACO Oleopator–Bypass G



**ACO. The future
of drainage**



Glass Fibre Light Oil Separators Oleopator–Bypass G



collect:
Collect and
remove



clean:
Pre-clean and
process



hold:
Protect and
attenuate



release:
Pump, discharge and
reuse



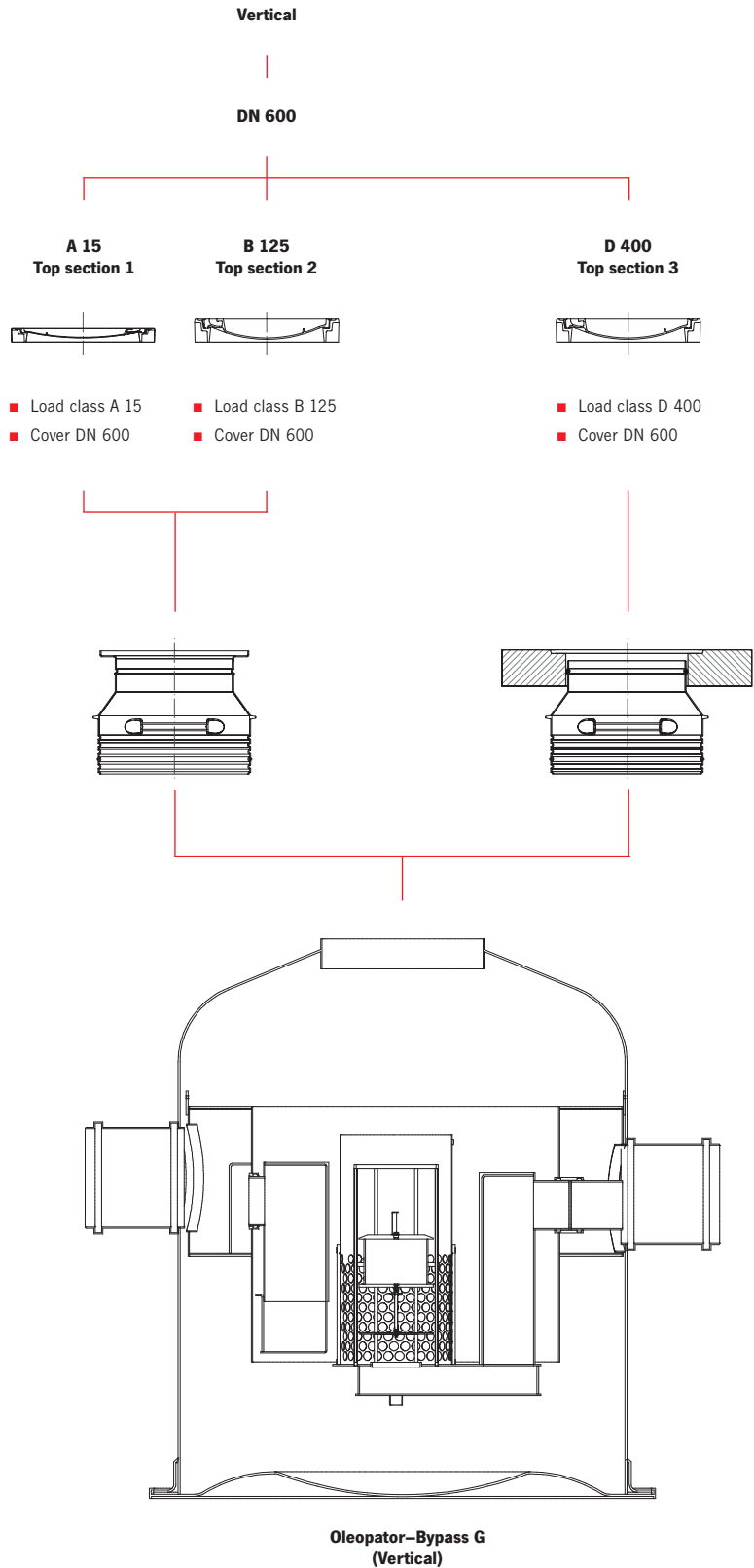
ACO system chain
in action

CONTENT

Assembly concept	4
<hr/>	
Oleopator–Bypass G	6
<hr/>	
Top sections for Light oil separators	8
<hr/>	
Accessories for for Light oil separators	10
<hr/>	

Assembly concept

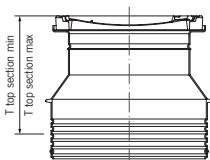
Assembly parts



Total height of the access opening (according EN 476):
 ■ DN 600 shall be max. 600 mm
 All deeper installation on request.

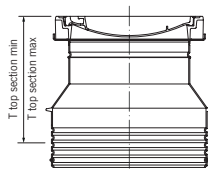
Top sections DN 600

A 15
Top section 1



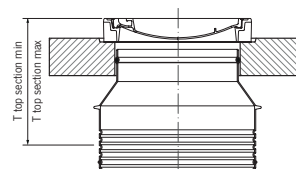
- Load class A 15
- Cover DN 600

B 125
Top section 2



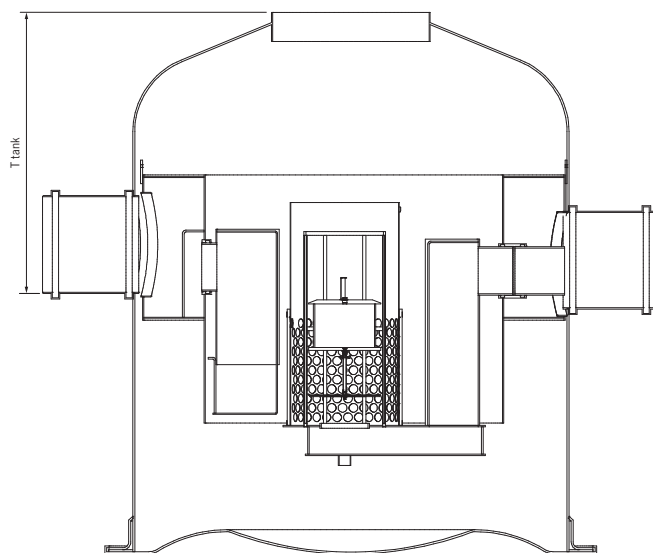
- Load class B 125
- Cover DN 600

D 400
Top section 3



- Load class D 400
- Cover DN 600

Bottom part



Oleopator-Bypass G
(Vertical)

Calculation of Installation depth

Top section 1 - 3

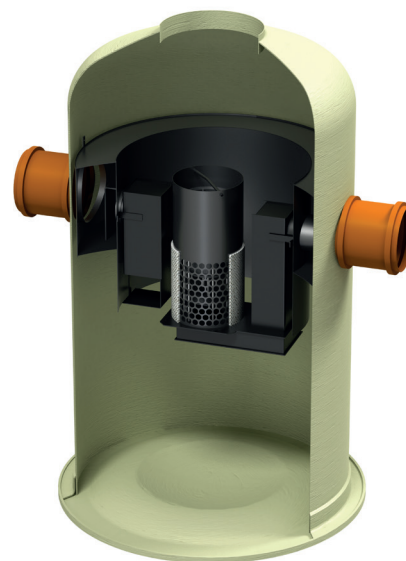
- $T_{total} = T_{tank} + T_{top\ section} (min - max)$

Oleopator-Bypass G

Product information

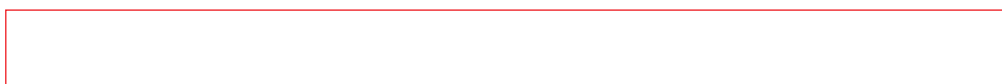
ACO Product benefits
<ul style="list-style-type: none"> ■ Option for drainage of large areas in combination with traditional separator technology ■ All functions integrated in a single tank ■ Takes up little space ■ Integrated connection for sampling device

- Tank made of glass reinforced plastic
- With coalescence insert (filter)
- Pipe connection using suitable push sockets or pipe connectors (no welded sockets)
- With bypass channel and integrated bypass control
- One-piece construction
- Application examples:
 - Parking surfaces
 - Industrial surfaces
- Inner parts made of PEHD

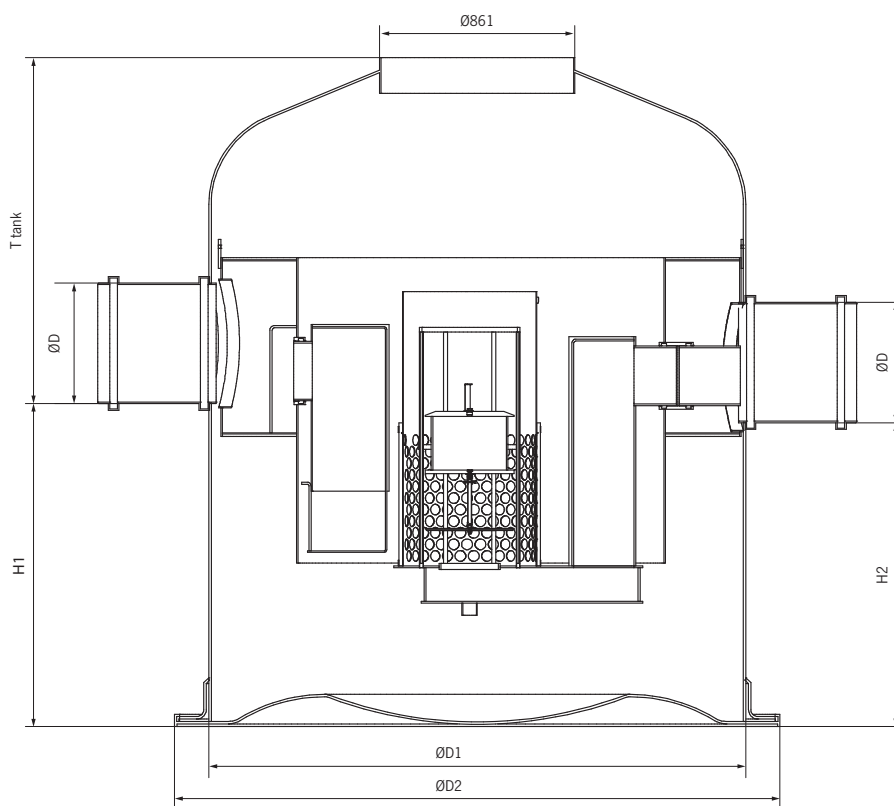


Order information

Nominal size	Inlet/outlet DN/OD [mm]	Max. Flow [l/s]	Volume			Weight [kg]	Item number
			Sludge trap [l]	Oil storage [l]	Total capacity [l]		
6	300	60	600	171	1318	195	12520.01
6	300	60	1200	171	1936	212	12521.01
6	300	60	1800	171	2554	230	12522.01
8	300	80	800	171	1530	202	12523.01
8	300	80	1600	171	2325	225	12524.01
8	300	80	2400	171	3120	245	12525.01
10	400	100	1000	171	1760	215	12526.01
10	400	100	2000	171	2749	245	12527.01
10	400	100	3000	171	3738	270	12528.01
15	400	150	1500	444	3311	470	12532.01
15	400	150	3000	444	4698	490	12533.01
15	400	150	4500	444	6180	530	12534.01
20	400	200	2000	570	4413	510	12535.01
20	400	200	4000	570	6427	560	12536.01
20	400	200	6000	570	8403	615	12537.01
30	500	300	3000	612	5439	535	12538.01
30	500	300	6000	612	8441	620	12539.01
30	500	300	9000	612	11442	700	12540.01



Dimensions



Nominal size	Item number	Dimension				
		H1 [mm]	H2 [mm]	ØD1 [mm]	ØD2 [mm]	T tank [mm]
6	12520.01	870	770	1500	1720	830
6	12521.01	1220	1120	1500	1720	825
6	12522.01	1570	1470	1500	1720	825
8	12523.01	990	890	1500	1720	825
8	12524.01	1440	1340	1500	1720	825
8	12525.01	1890	1790	1500	1720	825
10	12526.01	1120	1020	1500	1720	1010
10	12527.01	1680	1580	1500	1720	1010
10	12528.01	2240	2140	1500	1720	970
15	12532.01	1070	970	2200	2440	1220
15	12533.01	1435	1335	2200	2440	1215
15	12534.01	1825	1725	2200	2440	1215
20	12535.01	1360	1260	2200	2440	1370
20	12536.01	1890	1790	2200	2440	1370
20	12537.01	2410	2310	2200	2440	1370
30	12538.01	1630	1530	2200	2440	1360
30	12539.01	2420	2320	2200	2440	1360
30	12540.01	3210	3110	2200	2440	1360

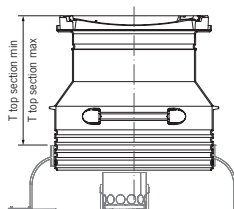
Top sections for Light oil separators

Top section 1 - load class A 15 / DN 600

Order information

ACO Product benefits

- Load class A 15 according to EN 124
- Frame from concrete, cover from cast iron
- Clear opening Ø 600 mm
- raising tube from polyethylene



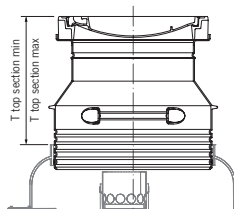
T top section (min-max)* [mm]	Manhole cover [mm]	Weight [kg]	Item number
520-640	Ø 600	94	3301.34.11
520-1090	Ø 600	103	3301.34.12
520-1690	Ø 600	113	3301.34.13

Top section 2 - load class B 125 / DN 600

Order information

ACO Product benefits

- Load class B 125 according to EN 124
- BEGU cover
- Clear opening Ø 600 mm
- Raising tube from polyethylene



T top section (min-max)* [mm]	Manhole cover [mm]	Weight [kg]	Item number
550-670	Ø 600	80	3301.35.11
550-1120	Ø 600	88	3301.35.12
550-1720	Ø 600	99	3301.35.13

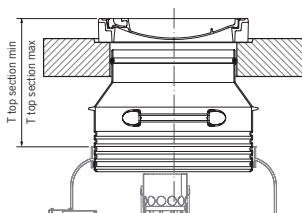
Note*: T total = T tank + T top section (min-max)

Top section 3 - load class D 400 / DN 600

Order information

ACO Product benefits




- Load class D 400 according to EN 124
- BEGU cover
- Clear opening Ø 600 mm
- Raising tube from polyethylene
- Selectively with load distribution plate from concrete





T top section (min-max)* [mm]	Manhole cover [mm]	Weight [kg]	Item number
550-680	Ø 600	814	3301.36.08
550-1130	Ø 600	822	3301.36.09
550-1730	Ø 600	834	3301.36.10
550-680 (without load distribution plate)	Ø 600	85	3301.37.08
550-1130 (without load distribution plate)	Ø 600	93	3301.37.09
550-1730 (without load distribution plate)	Ø 600	105	3301.37.10

Accessories for Light oil separators

Order information

	Product description	Model	Item number
	<p>Sampling shaft</p> <ul style="list-style-type: none"> ■ From polyethylene ■ Diameter 450 mm ■ For below ground installations ■ Downstream grease separators/starch separators ■ Cast iron/concrete cover for load class B 125 ■ Odour proof 	<p>DN 100, with 160 mm gradient DN 100, with 30 mm gradient DN 150, with 160 mm gradient DN 150, with 75 mm gradient</p>	<p>3300.13.10 3300.13.11 3300.13.20 3300.13.21</p>
	<p>Sampling shaft with load distribution plate</p> <ul style="list-style-type: none"> ■ From polyethylene ■ Diameter 450 mm ■ For below ground installations ■ Downstream grease separators/starch separators ■ Cast iron/concrete cover for load class D 400 ■ Odour proof 	<p>DN 100, with 160 mm gradient DN 100, with 30 mm gradient DN 150, with 160 mm gradient DN 150, with 75 mm gradient</p>	<p>3300.13.15 3300.13.16 3300.13.25 3300.13.26</p>
	<p>Extension element</p> <ul style="list-style-type: none"> ■ From polyethylene ■ For install aforementioned sampling shaft as a deeper position installations ■ Extension height 100 to 650 mm ■ Can be shortened at 45 mm intervals by cutting at the cutting marks 		<p>3300.13.00</p>

Order information

	Product description	Model	Item number
	<p>Sampling equipment</p> <ul style="list-style-type: none"> ■ Light liquid separators for bellow ground installation ■ Sampling equipment consisting of manual pump and suction coupling, connecting hose and suction coupling and bolt connection <p>Suitable for inlet invert maximum T = 3 000 mm</p>		701246
	<p>Sealing ring</p> <ul style="list-style-type: none"> ■ For ventilation connection 		M00295

ACO Industries Tábor s.r.o.

Prumyslova 1158
391 01 Sezimovo Usti
Czech Republic

www.aco.com

ACO. The future of drainage

All reasonable care has been taken in compiling the information in this document. All recommendations and suggestions on the use of ACO products are made without guarantee since the conditions of use are beyond the control of the Company. It is the customer's responsibility to ensure that each product is fit for its intended purpose and that the actual conditions of use are suitable. This brochure and any advice is provided free of charge and accordingly on terms that no liability (including liability for negligence) will attach the Company or its servants or agents arising out of or in connection with or in relation to this brochure or any such advice. Any goods supplied by the Company will be supplied solely upon its standard conditions of sale, copies of which are available on request. The Company's policy of continuous product development and improvement renders specifications liable to modification. Information provided in this brochure is therefore subject to change without prior notification.